

# Maumee Bay State Park

1400 State Park Road  
Oregon, Ohio 43616

(419) 836-7758 - Park Admin. Office  
(419) 836-8828 - Camp Store  
(419) 836-9117 - Nature Center  
(419) 836-8711 - FAX  
(866) 644-6727 - Camping Reservations

**Maumee Bay Resort (Quilter Lodge)**  
1750 State Park Road  
Oregon, Ohio 43616

(419) 836-1466 - Front Desk  
(800) 282-7275 - Lodge & Cottage Reservations  
(419) 836-2438 - FAX

### LEGEND

- Park Office
- Parking Lot
- Park Boundary
- Showerhouse/Latrine
- Amphitheater
- Public Fishing
- Bicycle/Jogging Trails
- Interpretive Boardwalk
- Wildlife Area
- Ditch
- Fishing Pier
- Public Phone
- Wheelchair Accessible
- Sunshelter

### LOCATION MAP

**Map Labels:** (Private Property), Bay Shore Rd., University of Toledo Lake Erie Research Center, Lagundovje Rd., Campground, Big Hill, Natural Meadows, Canoeing Lake, Reforestation Areas, Personal Watercraft Rental, Amphitheater, Marina, Quilter Lodge, Erie Beach, Swimming Beach, Boat Rental, INLAND LAKE, Nature Center, Wetlands, Pro Shop, Cottages, Scottish Links Golf Course, Park Office, Camp Store, Service Area, Cedar Point Rd., Campground Entrance, Main Park Entrance, Golf Course Service Area, To SR 2, N. Curtice Rd., Cousino Rd., Decart Rd., Decart Rd., Cedar Point National Wildlife Refuge, Mallard Club Marsh Wildlife Area (Hunting & Trapping Permitted), Maumee Bay (LAKE ERIE), Crane Creek Magee Marsh Wildlife Area.



# Maumee Bay State Park Campground

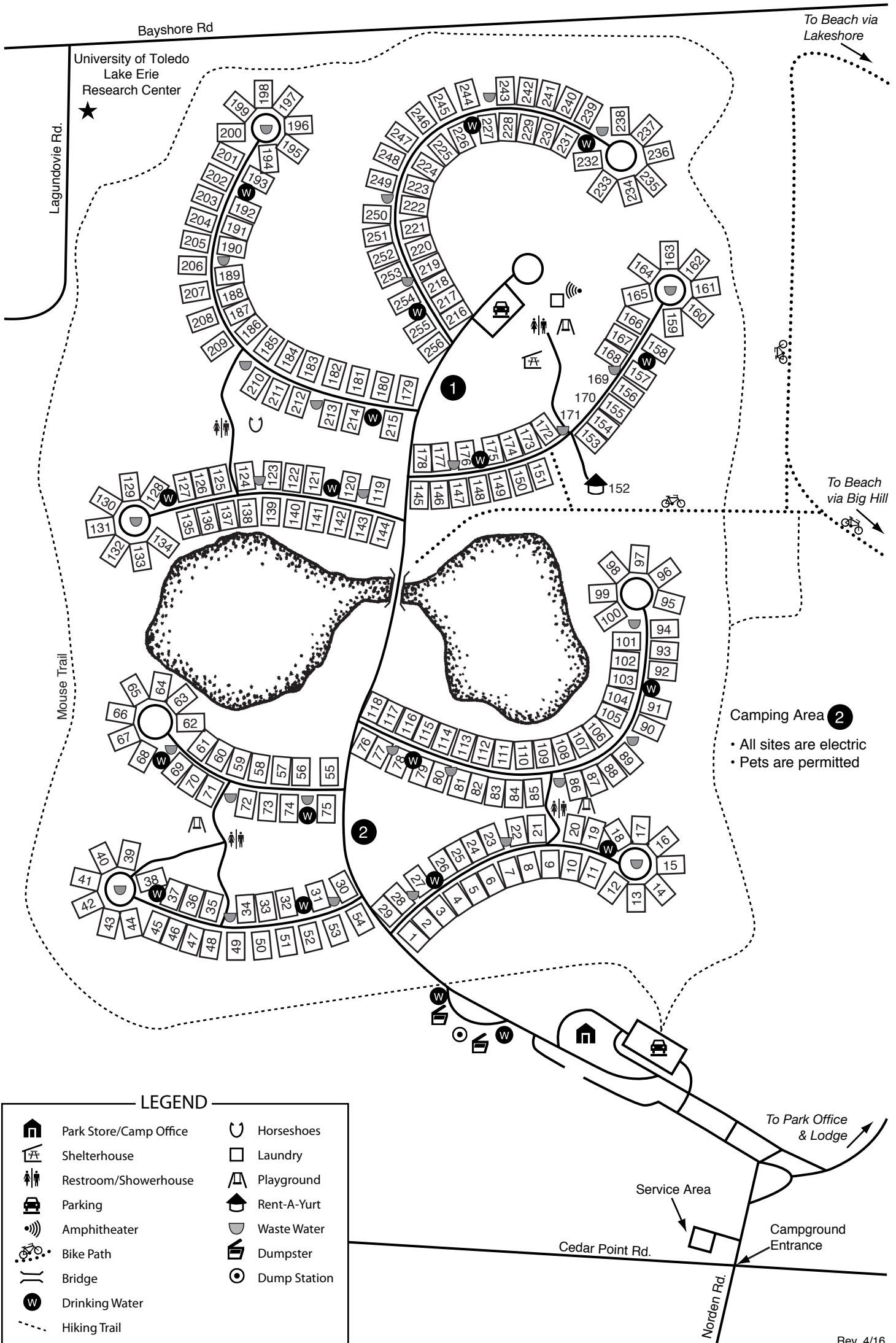
1400 State Park Road  
Oregon, Ohio 43616

(419) 836-7758 - Park Office  
(419) 836-8828 - Camp Office



## Camping Area 1

- All sites are electric
- Pets are permitted (except in Yurt)



## Camping Area 2

- All sites are electric
- Pets are permitted

### LEGEND

Park Store/Camp Office	Horseshoes
Shelterhouse	Laundry
Restroom/Showerhouse	Playground
Parking	Rent-A-Yurt
Amphitheater	Waste Water
Bike Path	Dumpster
Bridge	Dump Station
Drinking Water	
Hiking Trail	